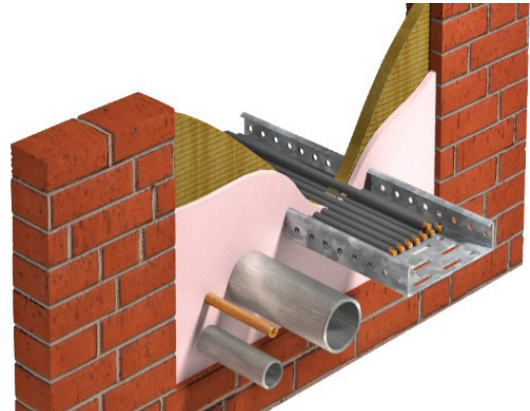


**QF2 Fire Protection Compound** is intended for use as a gap filling material where cables, ducts or pipework services penetrate fire compartment floors and walls. QF2 expands slightly on curing (1%), to form a rigid smoke and gas tight seal and is also suitable for use in load bearing situations. Subsequent to installation it will accept further services penetrating the barrier without damage.



QF2 Fire Protection Compound



QF2 Fire Protection Compound used in conjunction with MW Mineral Wool Slab

## FEATURES & BENEFITS

- 🔒 Fire tested to BS 476-20:1987 and the principles of EN 1366-3:1993 & BS EN 1366-3:2009
- 🔒 Up to 4 hour fire rating
- 🔒 Acoustic tested to BS EN ISO 140-3:1995
- 🔒 Up to 47dB reduction
- 🔒 Suitable for load bearing situations
- 🔒 Expands slightly on curing to form a rigid gas/smoke tight seal
- 🔒 The use of extensive shuttering is not necessary

## COMPOSITION

QF2 Fire Protection Compound is a non-combustible compound manufactured from lightweight aggregates, inorganic binders and gypsum cement.

## REGULATIONS

Building Regulations impose limitations on all services penetrating fire compartment walls and floors. QF2 Fire Protection Compound has been tested in accordance with the General Principles in BS 476: Part 20: 1987 in conjunction with the additional guide lines in the latest available draft document reference EN 1366-3: 1993 produced by the European Committee for Standardisation (CEN) relating to the fire resistance testing of penetration sealing systems. The tests were conducted on vertical and horizontal compartment walls and floors and indicated that it can provide fire resistance of up to four hours.

## DURABILITY

QF2 Fire Protection Compound is expected to last the lifetime of the service installation.

## APPLICATION / INSTALLATION

---

QF2 Fire Protection Compound may be used in all types of building and is compatible with most building materials. QF2 is simply added to clean water either in a bucket or a concrete mixer, mixed and poured or trowelled into position.

The setting time for QF2 depends on the atmospheric temperature. It may be built up further within two or three hours where large barriers are required. Do not attempt to use a mix ratio of less than 2:1 mortar to water volume. Adding further water to the partially cured system must be avoided at all times as this will irreversibly interfere with the curing process.

For horizontal barriers it is recommended that Quelfire MW Mineral Wool Slabs are tightly fitted into the opening so that the QF2 mortar may be poured on top of the slab to the required thickness. It is recommended that the mineral wool slab is not removed but remains in position as this offers an enhanced period of fire resistance.

For installation around combustible pipes the QWW CE Marked Intuwaps must be installed and backfilled with QF2 Compound to a minimum 100mm depth.

Where the barrier is required to provide a load bearing capability consideration should be given to structural support, such as reinforcing bars. Consideration may also be given to the use of a permanent shuttering system. In all loadbearing situations mortar thickness must be at least 100mm.

Where the thickness of the seal is built up using multi layers, the structural strength of the seal may be reduced. It is therefore recommended, particularly in load bearing situations, that a maximum of 10% thickness is installed initially and the remaining thickness applied as a further single operation.

For vertical or wall barriers it is recommended that Quelfire MW Mineral Wool Slab is installed as a tight fit into the aperture at the centre line of the fire compartment wall. QF2 may then be 'plastered' to a minimum thickness of 25mm to each side of the slab.

## YIELD

---

One Square metre at 100mm thickness requires approx. 4 x 20kg sacks of QF2 Fire Protection Compound and will provide a loadbearing 4 hour rated fire seal. One square metre at 50mm thickness requires approx. 2 x 20kg sacks of QF2 and provides a 2 hour rated seal.

## TECHNICAL SUPPORT & GUIDANCE

---

Should you require any further information regarding this product, please don't hesitate to contact Quelfire Ltd.

## SAMPLE SPECIFICATION

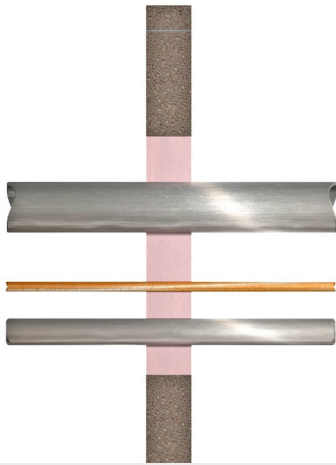
---

All gaps surrounding cables, ducts or pipework penetrating fire compartment floors or walls to be filled with QF2 Fire Protection Compound to a minimum depth of 50mm. Combustible services must be fitted with a suitable fire stop seal such as a QWW CE Marked Intuwrap or QWR CE Marked Fire Collar.

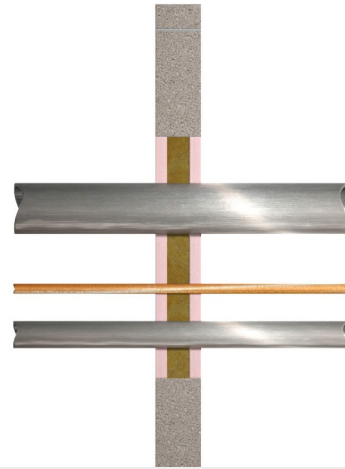
For installation in floors Quelfire MW Mineral Wool Slab can be installed friction fitted around penetrating services as a shutter. QF2 Fire Protection Compound should be applied over the MW Slab to a minimum thickness of 50mm.

For installation in walls Quelfire MW Slab can be installed friction fitted around penetrating services. QF2 Fire Protection Compound should be applied to a minimum thickness of 25mm on each side of the MW Slab.

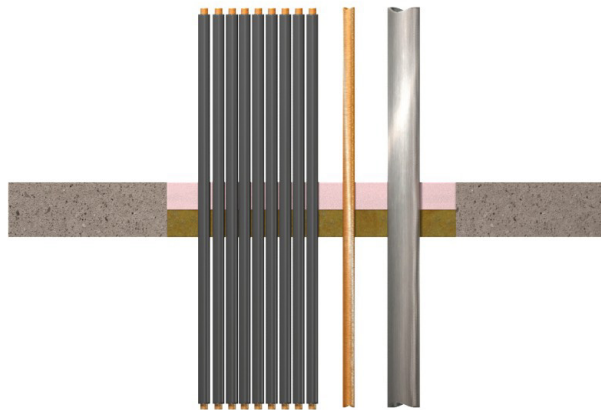
For a loadbearing seal the QF2 Fire Protection Compound must be applied to a minimum depth of 100mm.



Cross section of QF2 Fire Protection Compound used in a wall



Cross section of QF2 Fire Protection Compound used in a wall in conjunction with MW Mineral Wool Slab



Cross section of QF2 Fire Protection Compound used in a floor in conjunction with MW Mineral Wool Slab

**WARRANTY** The Company warrants its products to be free from defects in material and workmanship for a period of 12 months from the date of delivery. The Company's obligation under this warranty is limited, as its option, to the repair or replacement, free of charge, or refund of the net Invoiced price of any part found to be defective, and which, in the Company's opinion, has not been subject to undue wear and tear, accident, alteration, abuse or misuse. Consequent damages are expressly disclaimed. Technical advice from Quelfire whether verbal, in writing or by way of trials, is given in good faith but without warranty. The application, use and installation of the Company's products are beyond the control of the Company, and the purchaser is solely responsible that goods are fit for any particular purpose. In line with the Company's policy of continual research and development, product specifications and availability are subject to change or withdrawal without prior notice.

Quelfire maintain a policy of constant improvement and reserve the right to alter or amend the specifications of their products without notice. Quelfire is a Registered Trademark.